

EASE OF ACCESS CENTER

Alternative Learning Technologies to support students in lessons and for examinations

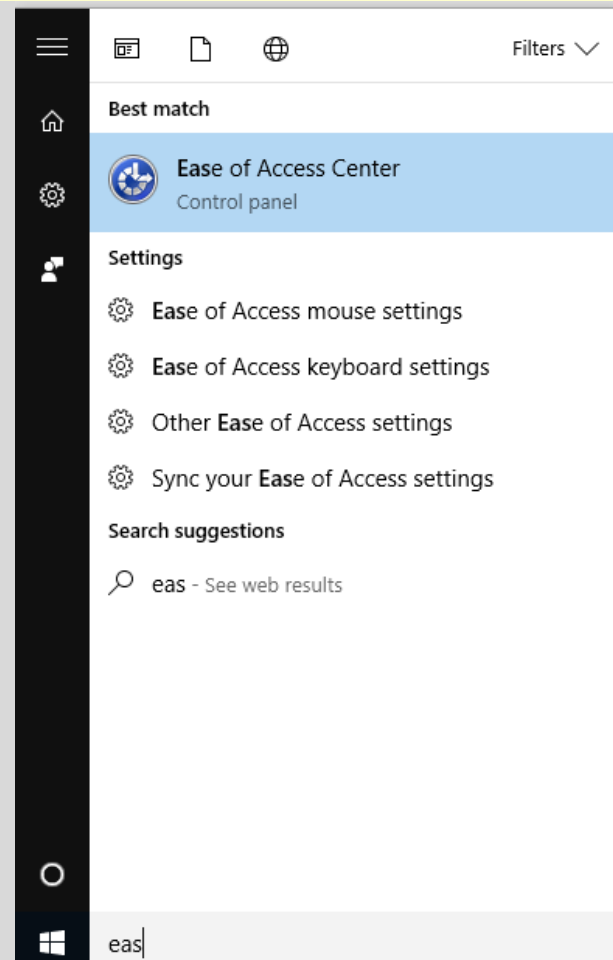
WHAT IS EASE OF ACCESS?

- Ease of Access is a Windows help centre that can be accessed on laptops and desktops that allows you to do the following:
- Use a narrator to read text to you
- Use a magnifier to enlarge images and text
- Change the contrast and colour of the screen
- Use closed captions to adapt fonts and background colours
- Keyboard functions - such as adding a sound when a letter is typed
- Change the use of the mouse and the size of the mouse cursor

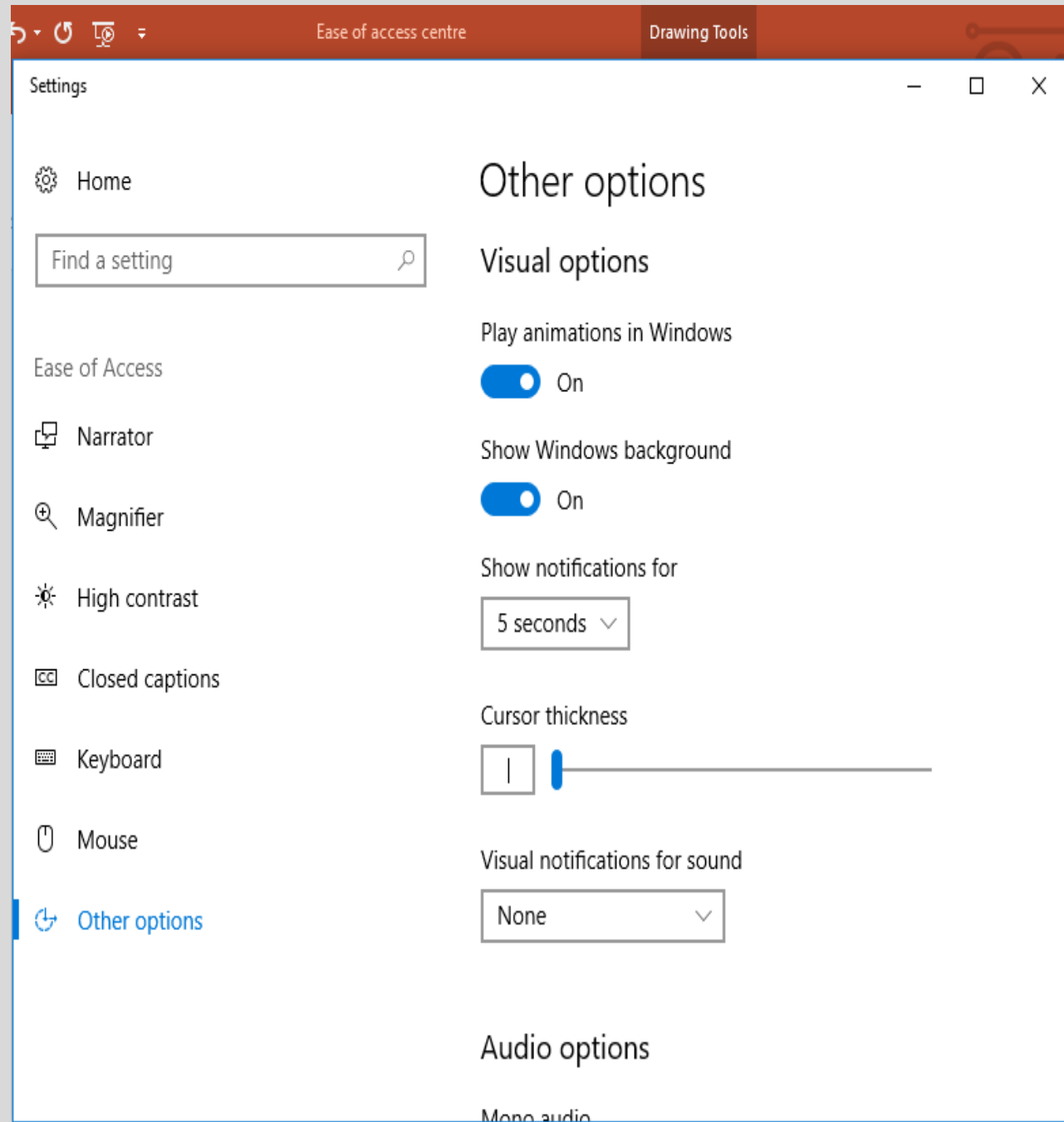


GETTING STARTED

- Ease of access can be turned on by using the search bar on the bottom left hand side of the screen.
- Type in "Ease of Access center"
- The menu will pop up, select the centre with this symbol:



A menu page will pop up, allowing you to select the setting you want to use.




To use narrator highlight the text or put the cursor next to the text to be read and it will read it.

304

Star Wars: The Last Jedi has critics in raptures

12 December 2017

f t m e Share



British actor John Boyega returns as former stormtrooper Finn

"Rousing." "Thrilling." "Addictively bold." Just a few of the superlatives the critics are using to describe the latest film in the Star Wars saga.

The Last Jedi, writes the **Telegraph**, is "enormous fun" and "will leave fans beaming with surprise".

The **Guardian** calls it "an explosive sugar rush of spectacle" possessing "a tidal wave of energy and emotion".

Variety, though, swims against the tide, describing it as "the longest and least essential chapter in the series".

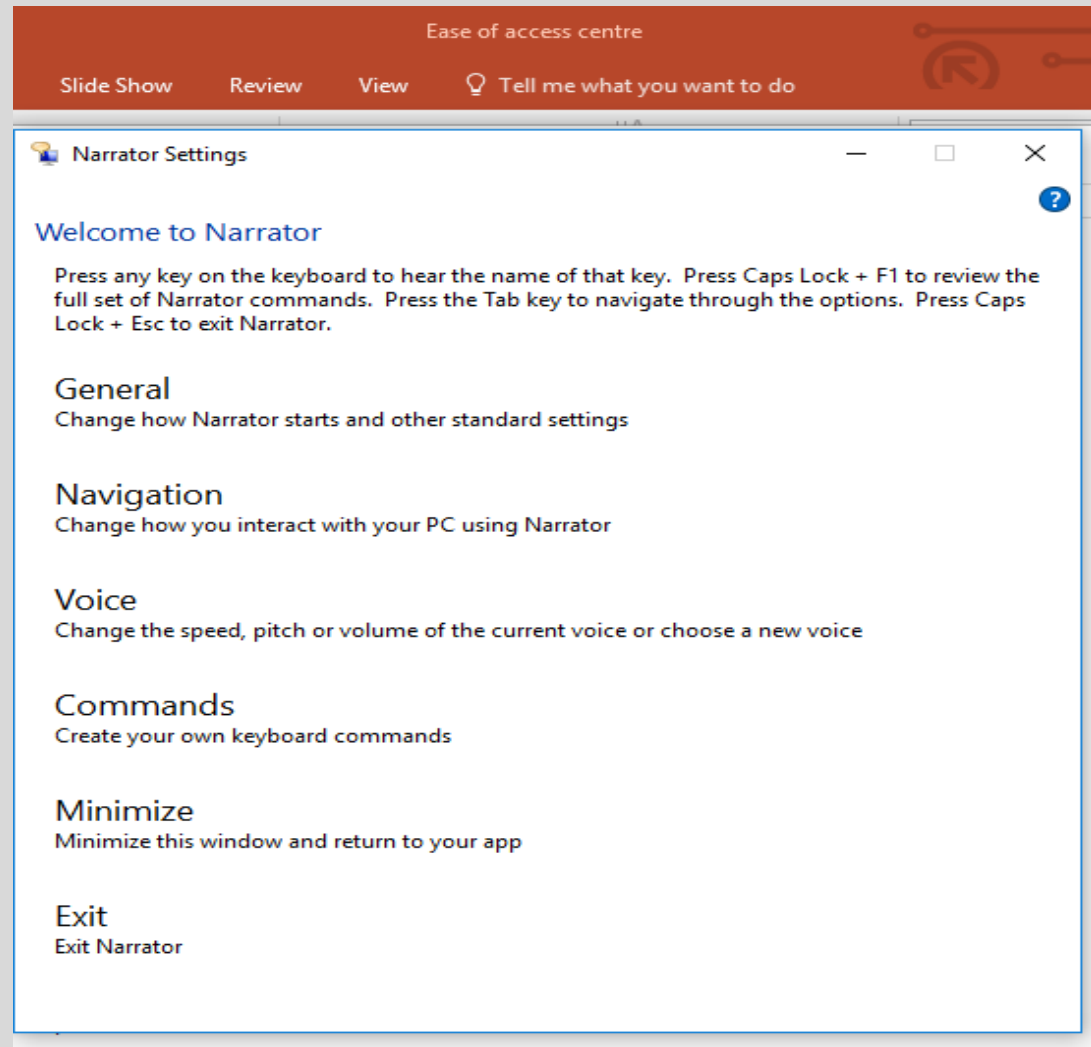
Rian Johnson's film, says **Peter Debruge**, is "ultimately a disappointment" that "gives in to the same winking self-parody that is poisoning other franchises of late."

Writing in **The Verge**, Tasha Robinson tends to agree: "Audiences will likely come

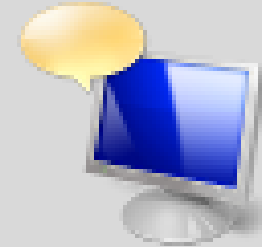


USING NARRATOR

- Narrator will read text on the screen including icons and program options. It can be used to read text in Word programmes, emails and from the internet. PDFs must be converted into a word document.
- It has a number of settings to make it easier to use; these need to be set up before use for the best access. It may take a little time to personalise it.
- Select each option and follow the instructions.



- To exit narrator:
- Select this icon on the bar at the bottom of the screen and choose exit narrator from the menu.



OTHER SETTINGS

- Settings such as magnifier and keyboard can be accessed in the same way as narrator.
- Select the setting and then follow the instructions to personalise the desktop as required.
- Ease of Access can be used a dictating tool, with a headset with a microphone. (Ask Emily for more information).
- Settings can be permanently set up so that they turn on when the computer does or can be reset each time.



WHAT ARE THE BENEFITS TO USING THIS AS A TOOL TO SUPPORT LEARNING?

- Users who have difficulty reading texts can access information more easily and at a pace that is appropriate for them.
- Access to a narrator enables the user to spend more time on their comprehension of text in order to respond to it.
- The user can proofread and check their work more easily.
- User with visual stress, hearing and visual impairments can access learning resources more easily.
- Users can be trained to use this as their normal way of working and can then use this facility in their examinations.

